

# Examination Questions - 2013/2014

## Internal Medicine

---

Midyear (*Essay*: 70, *MCQ*: 30)

1. What is synovial membrane & what happens to it in RA?
2. What are the nodes in OA; their location, pathophysiology & significance?
3. Short notes on:
  - A. Tetany
  - B. Malignant hypercalcemia
4. Discuss:
  - A. Differential diagnosis of short stature
  - B. Approach to a patient with gynecomastia
5. Advice & workup of 25 yo lady with epilepsy who wants to get pregnant?
6. Causes of acute coma in 20 yo adult?
7. Management of DKA.

## Orthopedics

---

Midyear (*Essay*: 85, *MCQ*: 15)

1. Diagnosis & treatment of club foot in 3 day old neonate.
2. Enumerate the causes of LLD (anisomelia) & discuss one of them.
3. Indications & complications of external fixation.
4. Write short notes on traction types.
5. Short notes on frozen shoulder (adhesive capsulitis).
6. Short notes on ITBS (iliotibial band friction syndrome)
7. Classification & management of proximal humeral fractures
8. Management of supracondylar fracture in a 9 yo child.
9. Classification & management of olecranon fractures.
10. Diagram to compare Colle's & Smith's fractures

## Radiology

---

Midyear (*MCQ*: 75, *Blanks*: 25)

## Ophthalmology

---

Midyear (*Essay*: 60, *MCQ*: 40)

1. Write about 6 extra-ocular muscles; origin, insertion, nerve supply, primary action.
2. Write about lens-associated cataract.
3. Complications of hypermature cataract.
4. Complications of uveitis.

## Psychiatry

---

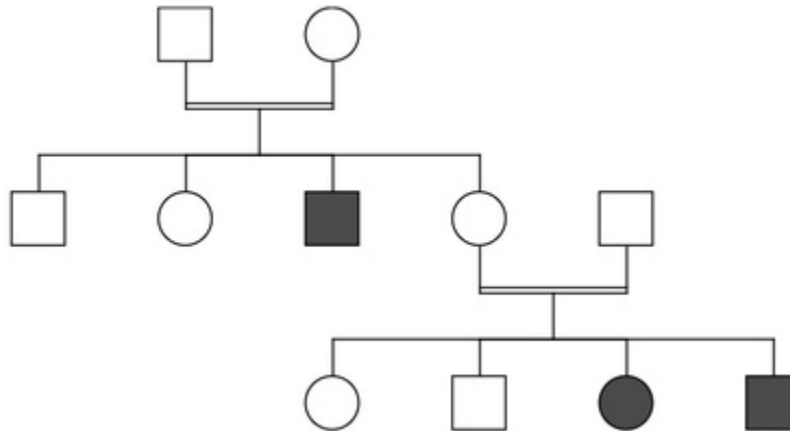
Midyear (*T&F*: 100 with cancelling 2x1)

## Pediatrics

---

Midyear (*Essay: 40, MCQ: 40*)

1. A case on rolandic epilepsy
  - a. What is the diagnosis?
  - b. What is the best treatment?
  - c. What is the prognosis?
2. A case on Duchenne Muscular dystrophy
  - a. What is the diagnosis?
  - b. What other test do you need to confirm the diagnosis?
  - c. What is the prognosis?
3. A case on HUS
  - a. What is the diagnosis?
  - b. Write two other tests to help in the diagnosis?
  - c. What was wrong with the initial management?
4. A case on leukemia
  - a. What is the diagnosis?
  - b. What test confirms the diagnosis?
5. Examine this pedigree (■: affected ♂, □: healthy ♂, ●: affected ♀, ○: healthy ♀, == : consanguinity)
  - a. What is the most likely mode of inheritance?
  - b. Write three diseases with this mode of inheritance.



## Urology

---

Midyear (*Long: 15, Short: 30, MCQ: 45*)

*Long essay*

1. Staging of bladder cancer
2. Management of acute pyelonephritis

*Short essay*

1. Predisposing factors for lower UTI
2. Resuscitation of a comatose patient with loin bruise after a road traffic accident
3. CT grading of renal trauma
4. Causes of hydronephrosis
5. Clinical features of vesical stones
6. Causes of bladder fistulas

## ENT

---

Midyear (*MCQ*: 50)

## Surgery & Anesthesia

---

Midyear (*Case*: 15, *Short*: 35, *MCQ*: 50)

**Q1//** A 24 yo male (185cm, 78 kg) cabin crew worker presented to the emergency department with sudden-onset of right-sided chest pain, dyspnea and dry cough. On examination there was absent breath sounds on the right side but normal breath sounds on the left, the tracheal position was central. The condition started 3 days ago and has gotten worse since. There was no history of trauma and the medical history was insignificant.

- A. What is the most likely provisional diagnosis?
- B. What is the best line of management?
- C. Is there any indication for surgery?

**Q2//** Short notes on the followings:

- A. ASA Physical Status classification
- B. Clinical Predictors of Increased Perioperative Cardiovascular Risk
- C. Total Circulatory Arrest
- D. Indications for surgery in VSD
- E. What is the Q10 rule and what is its benefit?

## Gynecology

---

Midyear (*Essay*: 60, *T&F*: 30, *MCQ*: 10)

1. What are the causes of infertility, discuss ovulatory causes of infertility in details & how to treat them.
2. What is emergency contraception? Discuss its types.
3. Discuss vulvo-vaginitis in children.
4. A 32 yo woman G<sub>2</sub>P<sub>1</sub> presented to the gynecological department with a history of 2 missed periods, mild brown vaginal discharge, nausea and vomiting in the morning. On ultrasound there was a uterine mass with a snowstorm pattern.
  - a. What is the most likely diagnosis?
  - b. What other investigation will help you to reach the diagnosis?
  - c. How do you manage this case
5. Discuss the followings:
  - a. Signs & Symptoms, Diagnosis and Management of Hepatitis B.
  - b. Signs & Symptoms, Diagnosis and Management of Chlamydia.
6. Define ovarian reserve, which group of women need this test?

## Dermatology

---

Midyear (*MCQ*: 120)

# 5<sup>th</sup> Stage Exam Questions – Year 2012-2013

## INTERNAL MEDICINE

---

### Mid-Year

Essay: 70 marks          Single-choice: 30 marks

1.        A. Write about investigations for Graves' disease.  
          B. Write about adrenal crisis and the advice given to a patient with Addison disease.
2. What are the criteria for the diagnosis of pre-diabetes and diabetes in adult non-pregnant patients?
3.        A. What are the causes of thunderclap headache?  
          B. What are the indications, contraindications, and complications of lumbar puncture?
4. Write about the management protocol for status epilepticus.
5. What are the types of deformity in osteoarthritis of knee and why do they occur?
6. Write about rheumatoid serum factor and its role in diagnosing rheumatological diseases.
7.        A. What are the risk factors for UTI?  
          B. What are measures to reduce hyperkalemia in chronic kidney disease?

### Final-Year

Essay: 80 marks          Single-choice: 20 marks

1. Enumerate risk factors for multiple sclerosis and write short notes on them.
2. Enumerate types of lower motor neuron disease and give examples for each and write short notes on each type.
3. Write short notes on myxoedema coma.
4. Write briefly about the diagnosis and treatment of von Willebrand disease.
5. A married 25-year old woman with SLE wants to get pregnant. How do you advise her and how do you follow her up?
6. List the cardiotoxic drugs, their mechanisms of action, and lines of management.
7. A 52-year old man presents with blood pressure ~ 157/98 mmHg persistently on 3 occasions in 2 months duration, smokes 10 cigarettes a day, no alcohol, and no past medical history. His younger brother was recently admitted for MI. Total cholesterol is 6.2, HDL is 1.3, and glucose is normal.
  - A. What is the 10-year cardiovascular disease risk for this patient? (chart provided)
  - B. Do you start treatment? If yes with which one?
  - C. What are the indications for ambulatory blood pressure monitoring?
  - D. If blood pressure remains high what other medication do you add?
8. Discuss briefly the treatment of glomerulonephritis.

## GYNECOLOGY

---

### Mid-Year

Essay: 60 marks      True-false: 30 marks (no cancelling)      Single-choice: 10 marks

1. Write about the mode of action, side effects, and contraindications of IUCD.
2. Discuss the details of changes during puberty in females.
3. A case on ectopic pregnancy
  - A. What is the diagnosis?
  - B. What are the criteria for medical management?
  - C. What are types of medical management?
  - D. What are the risk factors for this condition?
4. A case on missed miscarriage
  - A. What is the diagnosis?
  - B. What are the ways of management?
5. A case on PID
  - A. What is the diagnosis?
  - B. What are the indications for in-patient management?
6. Write about the diagnosis of gonorrhoea and *Chlamydia* infections.

### Final-Year

1. A 62-year old woman presents with heaviness in vagina and something protruding from the introitus.
  - A. What is the most likely diagnosis?
  - B. What are the risk factors for this condition?
  - C. Mention three important investigations.
2.
  - A. Define chronic pelvic pain syndrome and what are its causes?
  - B. Enumerate complications of laparoscopy.
3. Discuss the classifications of urinary incontinence and define each type.
4. A woman presents with thick, white, curdy discharge and vulvar erythema.
  - A. What is the most likely diagnosis?
  - B. What are the risk factors for it?
  - C. How would you confirm it?
  - D. How would you treat it?
5.
  - A. Write about the treatment of ovulatory factor of infertility.
  - B. Define premenstrual syndrome and mention its treatment.
6.
  - A. Define dysplasia, dyskariosis, CIN III, and squamo-columnar junction.
  - B. What are the risk factors for ovarian cancer?

## **ORTHOPEDICS**

---

### **Mid-Year**

Essay: 70 marks                  Single-choice: 30 marks

1. Enumerate the indications of internal fixation.
2. Enumerate the late local complications of fractures.
3. Discuss the treatment and complications of anterior dislocation of shoulder.
4. Discuss the management of fracture shaft of humerus.
5. Write shortly on patello-femoral pain.
6. Write shortly on shoulder impingement syndrome.
7. Define felon, and discuss its management and its complications.
8.        A. What are the predisposing factors and causes of avascular necrosis?  
          B. What are the causes and cardinal pathological changes of osteoarthritis?
9.        A. Write about the classification of cerebral palsy.  
          B. Discuss the three kinds of spina bifida.
10. Enumerate the complications of amputation.

### **Final-Year**

Essay: 70 marks                  Single-choice: 30 marks

1. Enumerate benign bone lesions and discuss one of them.
2. Discuss the diagnosis and treatment of C6-C7 intervertebral disc prolapse.
3. Discuss the clinical features of talipes equinovarus in a 3-day old neonate.
4. Discuss the clinical features of Perthes' disease in a 6-year old boy.
5. Discuss the treatment of scaphoid fractures.
6. Enumerate the risk factors and causes of avascular necrosis of bone.
7. Write shortly about shoulder instability.
8. Discuss the treatment and complications of fracture shaft of femur.
9. Discuss the mechanism of injury, clinical features, and treatment of patellar fractures.
10. Discuss the classification and management of malleolar fractures.

## **UROLOGY**

---

### **Mid-Year**

Long essay: 30 marks

1. Discuss pyelonephritis.
2. What are the causes of urine retention?

Short essay: 30 marks

1. Discuss hydronephrosis.

2. What are the clinical features of intra-peritoneal rupture of urinary bladder?

Single-choice: 40 marks

**Final-Year**

Essay: 40 marks          Single-choice: 60 marks

Long essay:

1. Discuss the treatment of metastatic CA prostate.
2. Discuss management of a man with a large abdominal mass and a palpable testicular mass.

Short essay:

1. Write about the treatment of recurrent 1.2 cm upper ureter stone.
2. Write about the 4-cup test for localization of UTI.
3. Write about the clinical presentation and treatment of acute cystitis.
4. How do you evaluate a 3-year old baby with palpable lower abdominal mass and passing urine every 5-10 minutes?

**PEDIATRICS**

---

**Mid-Year**

True-false: 40 marks (with cancelling)    Single-choice: 30 marks

Case questions: 30 marks (three cases each with three short-answer questions)

1. A case on VSD
2. A case on dehydration from diarrhea
3. A case on HSV encephalitis

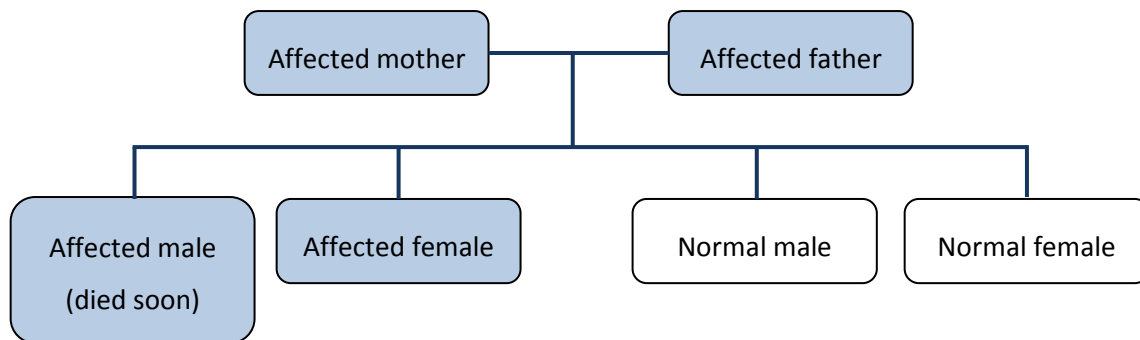
**Final-Year**

Single-choice: 40 marks

1. A case on hypertrophic pyloric stenosis
  - A. What is the most likely diagnosis?
  - B. What is the best diagnostic investigation?
2. A case on bloody diarrhea
  - A. What is the most likely organism?
  - B. Mention two complications.
3. A case on Guillain-Barré syndrome
  - A. Mention two more investigations to reach the diagnosis.
  - B. What is the most likely diagnosis?
  - C. Mention the single best drug therapy.
4. A case on post-infectious glomerulonephritis
  - A. What is the most likely diagnosis?
  - B. Mention two more investigations to confirm the diagnosis.

C. Outline the management of this case.

5. Examine this pedigree



A. What is the most probable pattern of inheritance?

B. What is the most likely diagnosis in this case?

6. Enumerate the points of advice to a patient with diabetes.

## **SURGERY AND ANESTHESIA**

---

### **Mid-Year**

Essay: 50 marks

Single-choice: 50 marks

1. A case on empyema thoracis

A. What is the most likely diagnosis?

B. What is your diagnostic workup for this patient?

C. What is your management?

2. A. Write about the treatment of rib fractures.

B. Write about bronchoscopy.

C. What are the thoracic surgical approaches?

3. What are the points in history about previous adverse responses to anesthesia?

4. What are the primary aims of pharmacological premedication?

### **Final-Year**

Essay: 50 marks

Single-choice: 50 marks

1. An elderly man presents with a 2-year history of urinary incontinence and wide-based shuffling gait which were attributed to prostatism and old age. In the last three months features of dementia have appeared (problems with memory, etc). He had a head trauma 30 years ago.

A. What is the most likely diagnosis?

B. How would you confirm it?

C. How would you treat it?

2. Discuss the factors important in choosing the type of heart valve (mechanical or tissue) for replacement.



3. What are the immediate and late complications of extubation of endotracheal tube?
4.
  - A. What are the differences between skin graft and skin flap.
  - B. Define scar and how do you obtain fine scar?
  - C. Enumerate the diagnostic modalities for lung cancer.

## **OPHTHALMOLOGY**

---

### **Mid-Year**

Essay: 40 marks          Single-choice: 60 marks

1. Write about the immediate and subsequent management of alkali burns.
2. Enumerate 5 therapeutic indications for contact lens wear.
3. Discuss briefly the causes of blepharitis.
4. Mention three types of proptosis and their causes.

### **Final-Year**

Essay: 40 marks          Single-choice: 60 marks

1. Talk briefly about classification of glaucoma.
2. What are the clinical features of perforating injury to the eyeball?
3. How do you manage a 1-year old child presenting with red, sticky, watery eye?
4. Write about the management of 3<sup>rd</sup> nerve palsy.

## **RADIOLOGY**

---

### **Mid-Year and Final-Year**

Single-choice: 75 marks          Blank: 25 marks

## **DERMATOLOGY**

---

### **Mid-Year and Final-Year**

100 Single-choice questions

## **PSYCHIATRY**

---

### **Mid-Year and Final-Year**

100 True-false questions (in the mid-year one wrong answer cancelled one correct answer but in the final-year 2 wrong answers cancelled one correct answer)

## **ENT**

---

### **Mid-Year and Final-Year**

50 Single-choice questions